

Sichtung der ersten Ergebnisse des mobilen Geschwindigkeitsmessgerätes

Langelohe
L 160



Anmelden



Hauptstraße
Werner Winkelmann

Horstredder

Hauptstraße

Hauptstraße

Hauptstraß



Karte

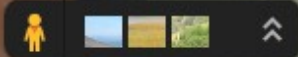
Google



3D

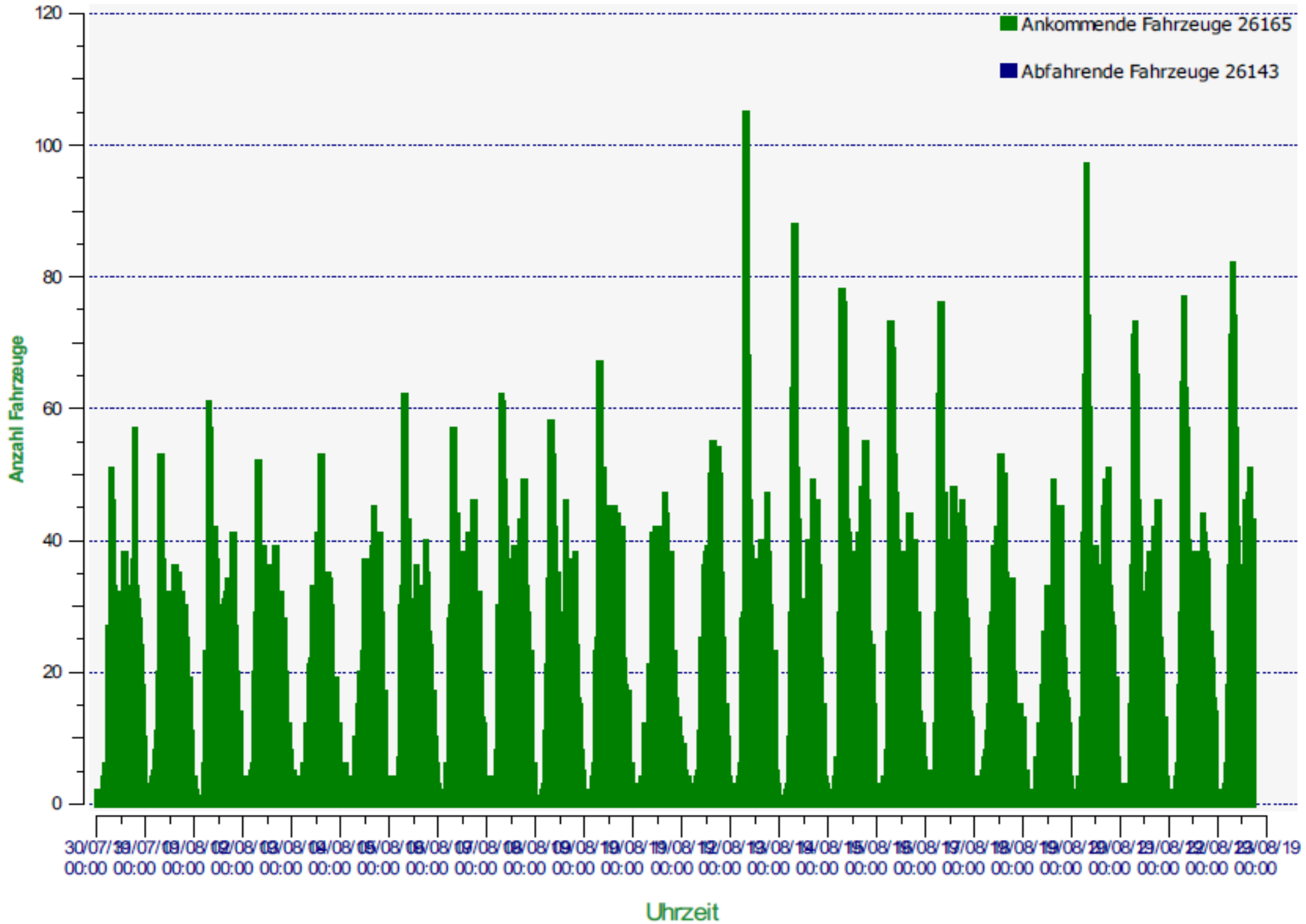
+

-

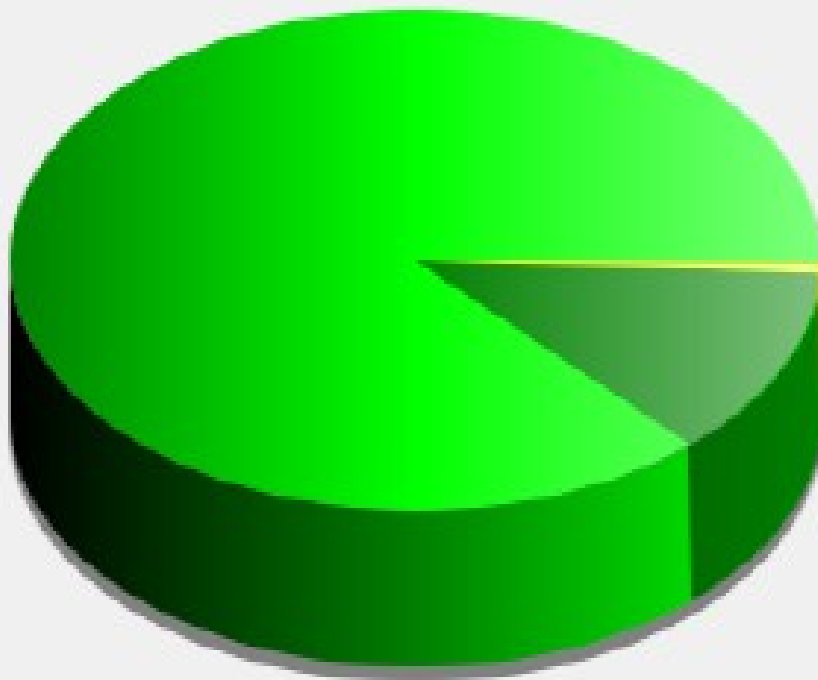






30. Juli bis 22. August

Fahrzeuge pro Stunde

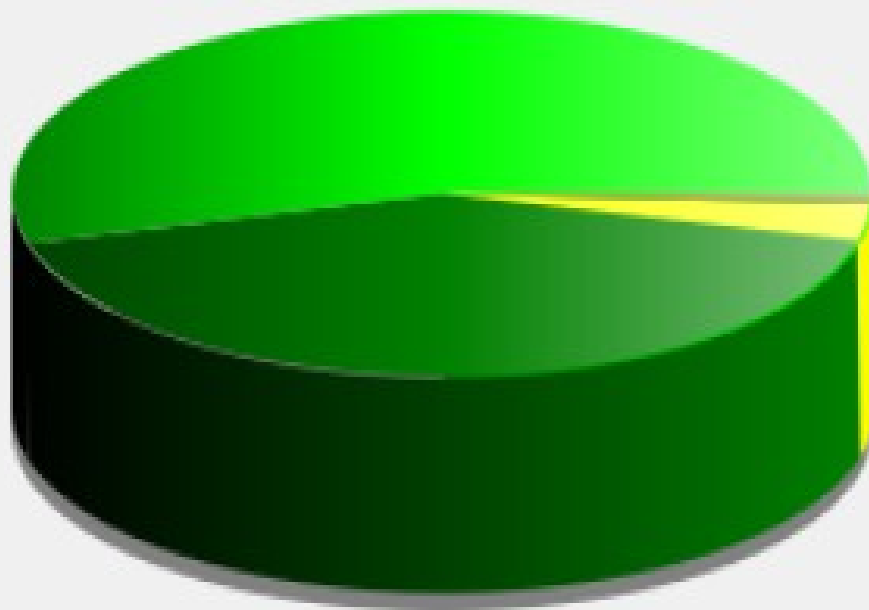


Ankommende Fahrzeuge

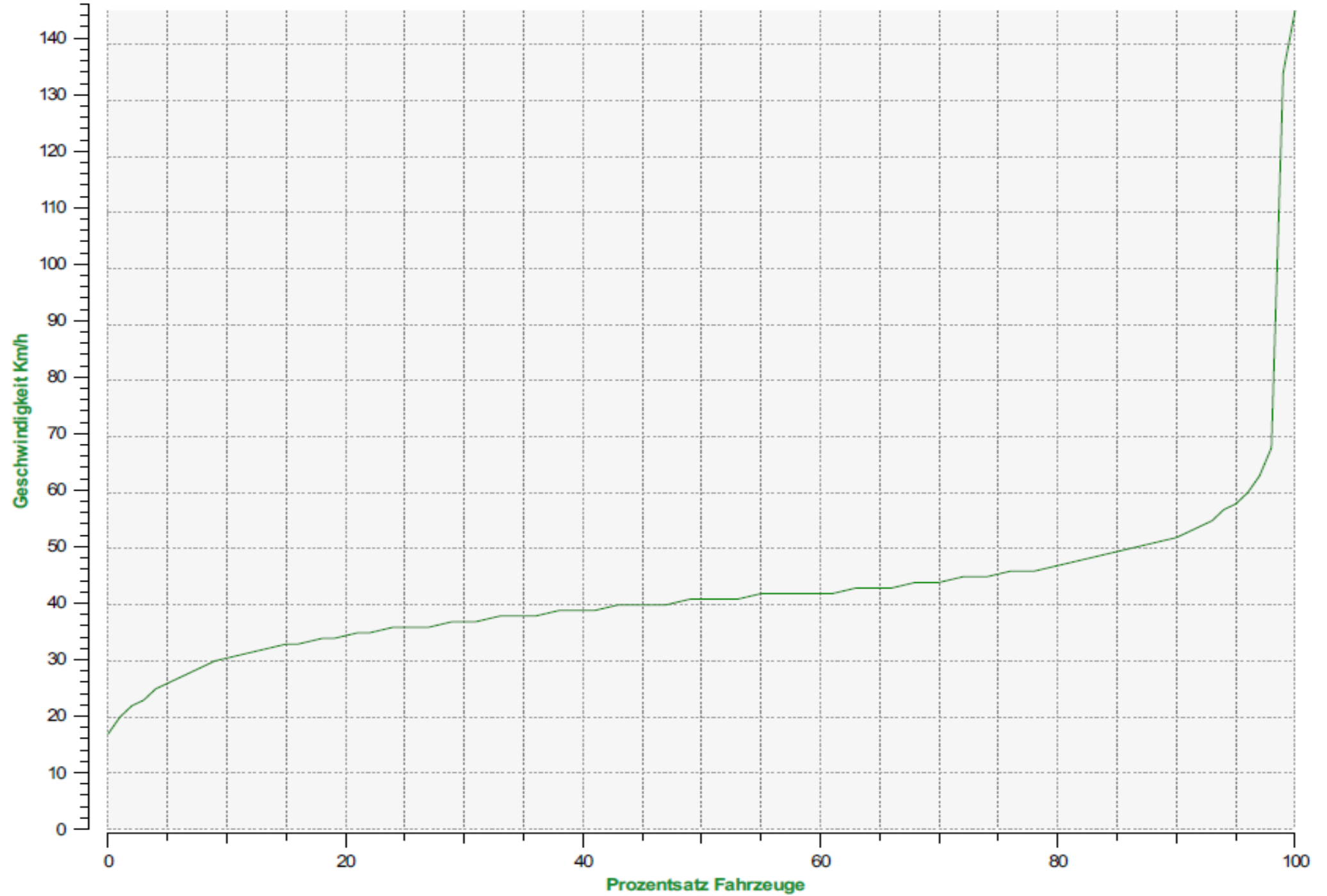


| | |
|---|--------------------------------------|
|  | <= 50 Km/h : 22.727 - (86.86 %) |
|  | 51 - 70 Km/h : 3.223 - (12.32 %) |
|  | 71 - 90 Km/h : 200 - (0.76 %) |
|  | 91 - 110 Km/h (et +) : 15 - (0.06 %) |

Abfahrende Fahrzeuge

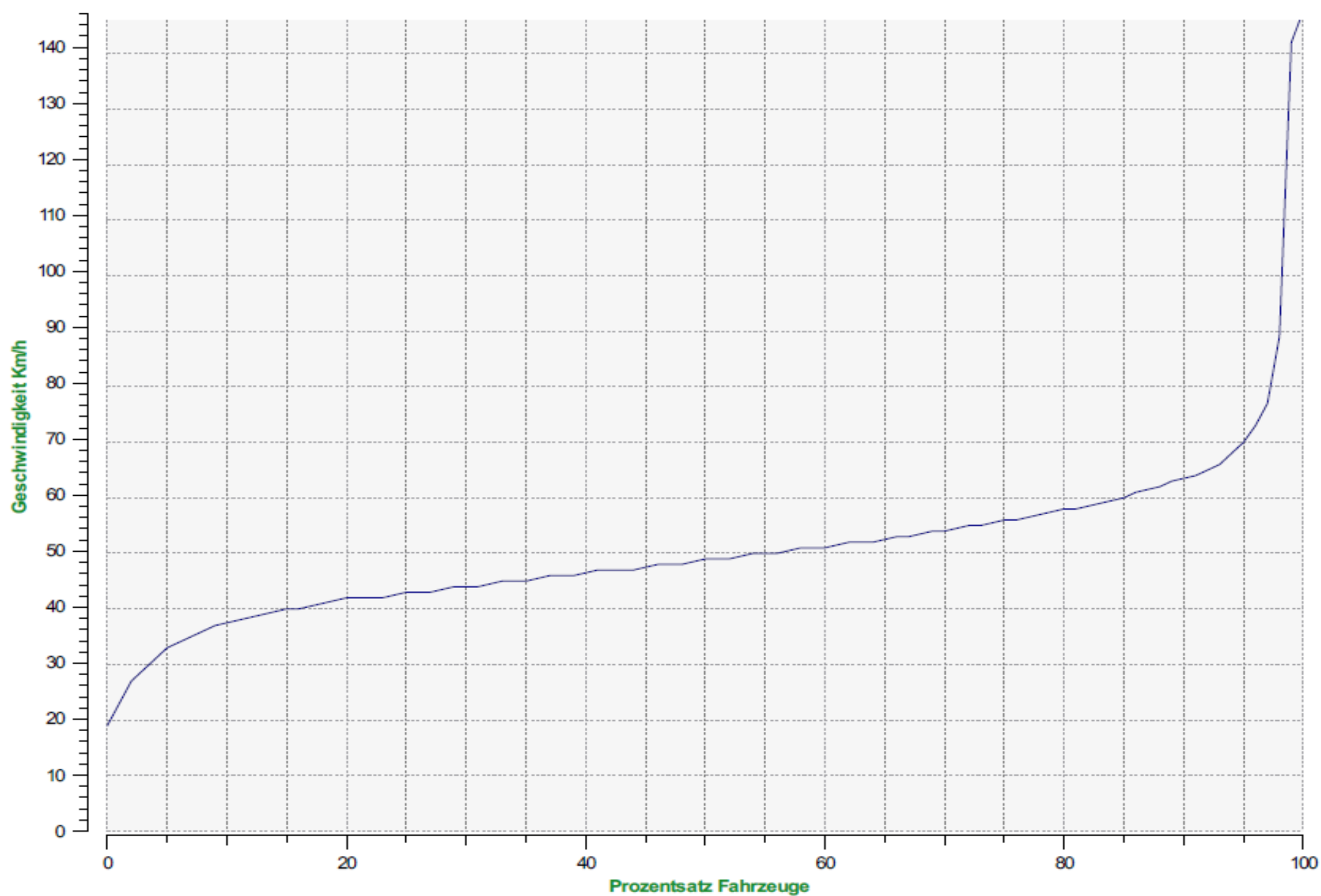


- <= 50 Km/h : 14.229 - (54.43 %)
- 51 - 70 Km/h : 10.825 - (41.41 %)
- 71 - 90 Km/h : 840 - (3.21 %)
- 91 - 110 Km/h (et +) : 249 - (0.95 %)



Perzentil Geschwindigkeit ankommende Richtung

V30: 37.00Km/h **V50:** 41.00Km/h **V85:** 49.00Km/h



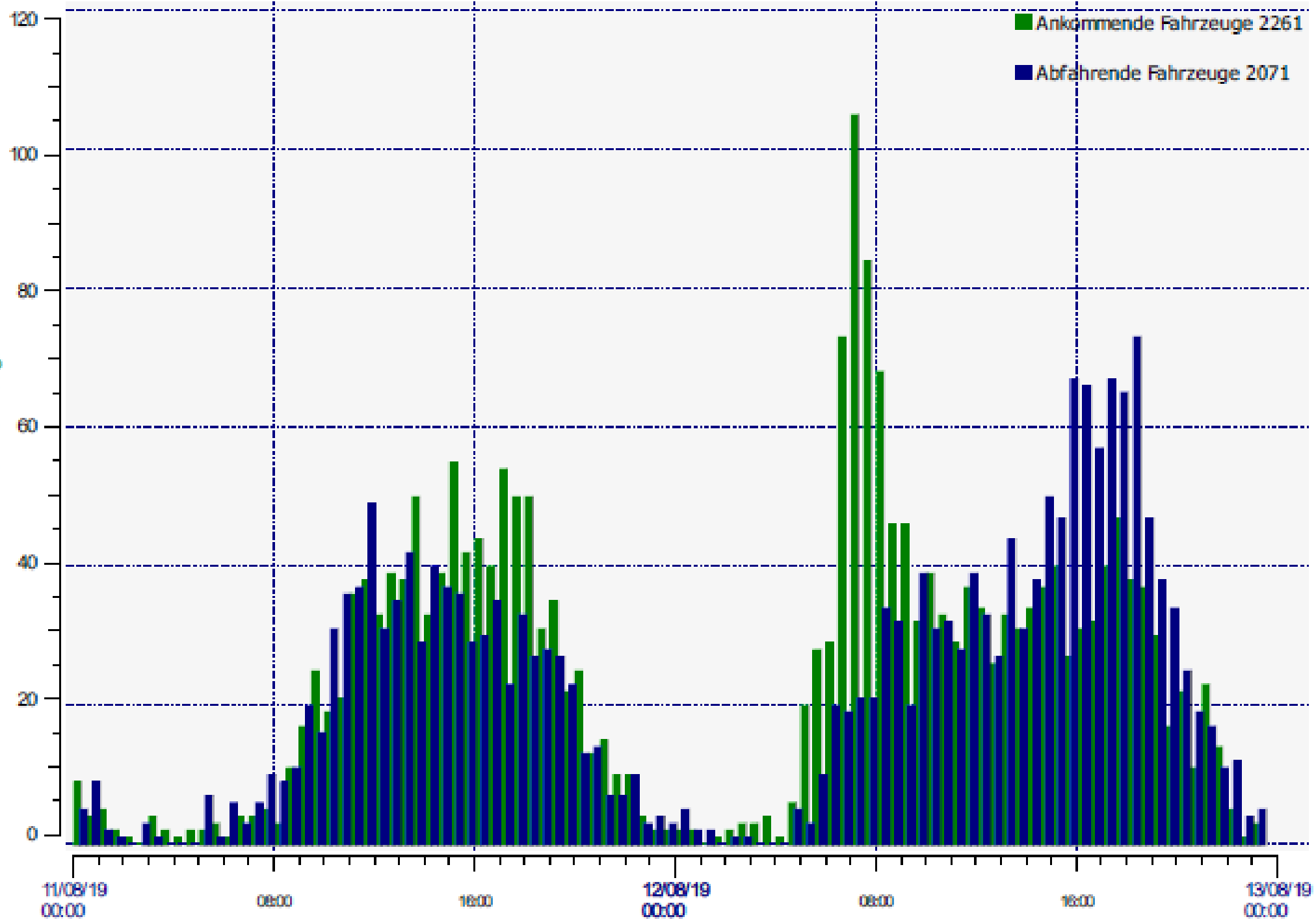
Prozentsatz Fahrzeuge

Perzentil Geschwindigkeit abfahrende Richtung

V30: 44.00Km/h **V50:** 49.00Km/h **V85:** 60.00Km/h

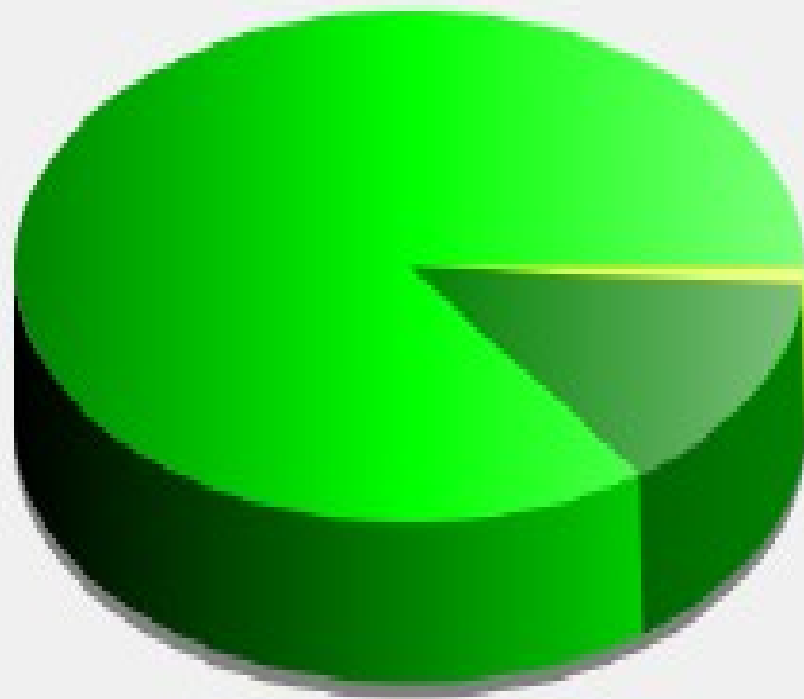
12. bis 13. August





Fahrzeuge pro Stunde



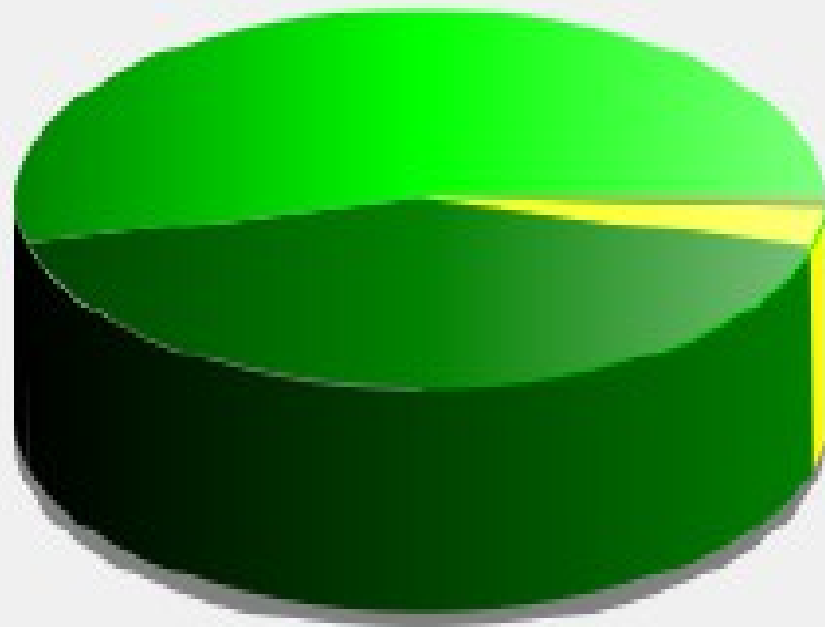
Uhrzeit

Ankommende Fahrzeuge

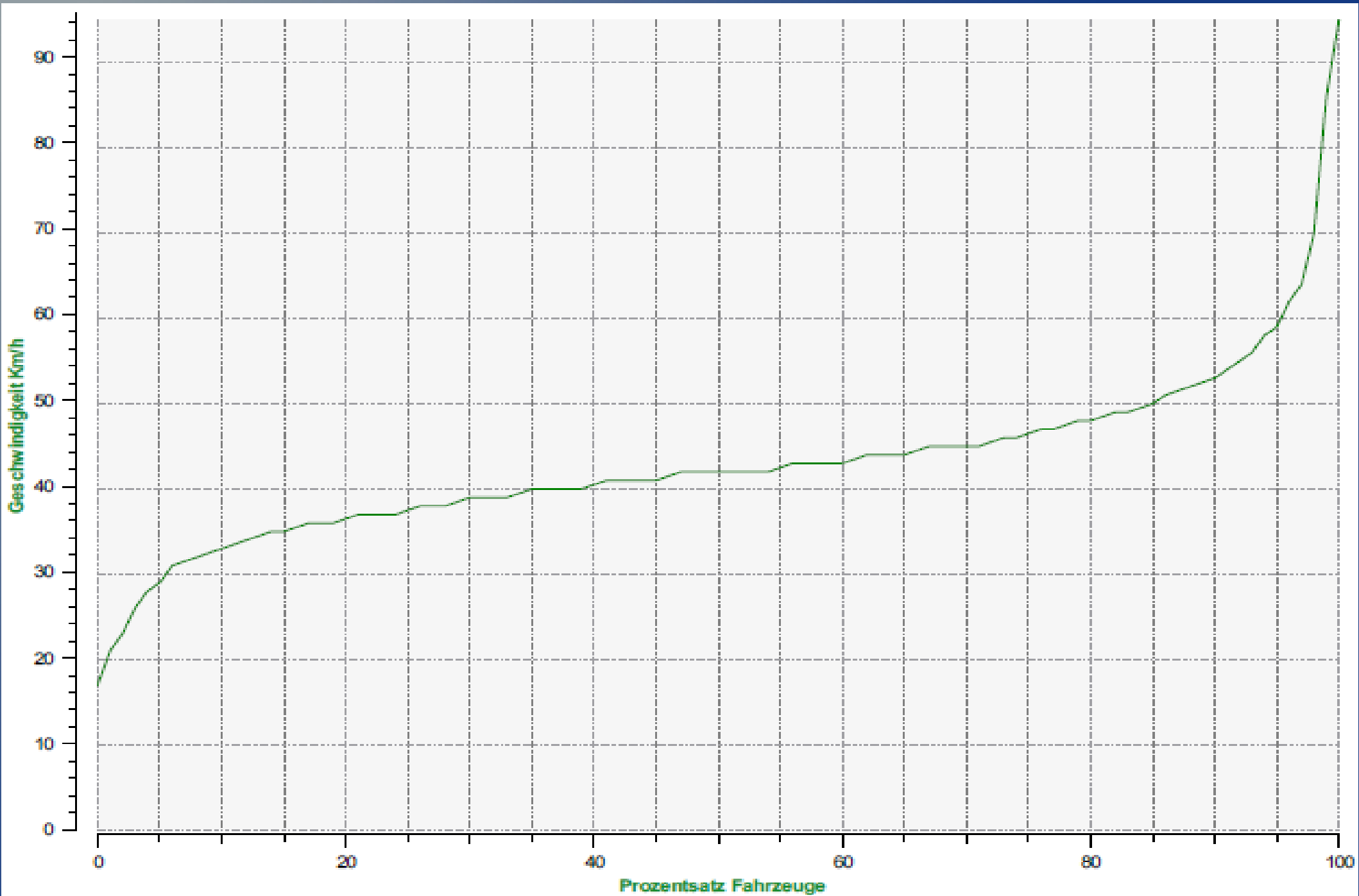


| | |
|---|-------------------------------------|
|  | <= 50 Km/h : 1.922 - (85.01 %) |
|  | 51 - 70 Km/h : 316 - (13.98 %) |
|  | 71 - 90 Km/h : 22 - (0.97 %) |
|  | 91 - 110 Km/h (et +) : 1 - (0.04 %) |

Abfahrende Fahrzeuge

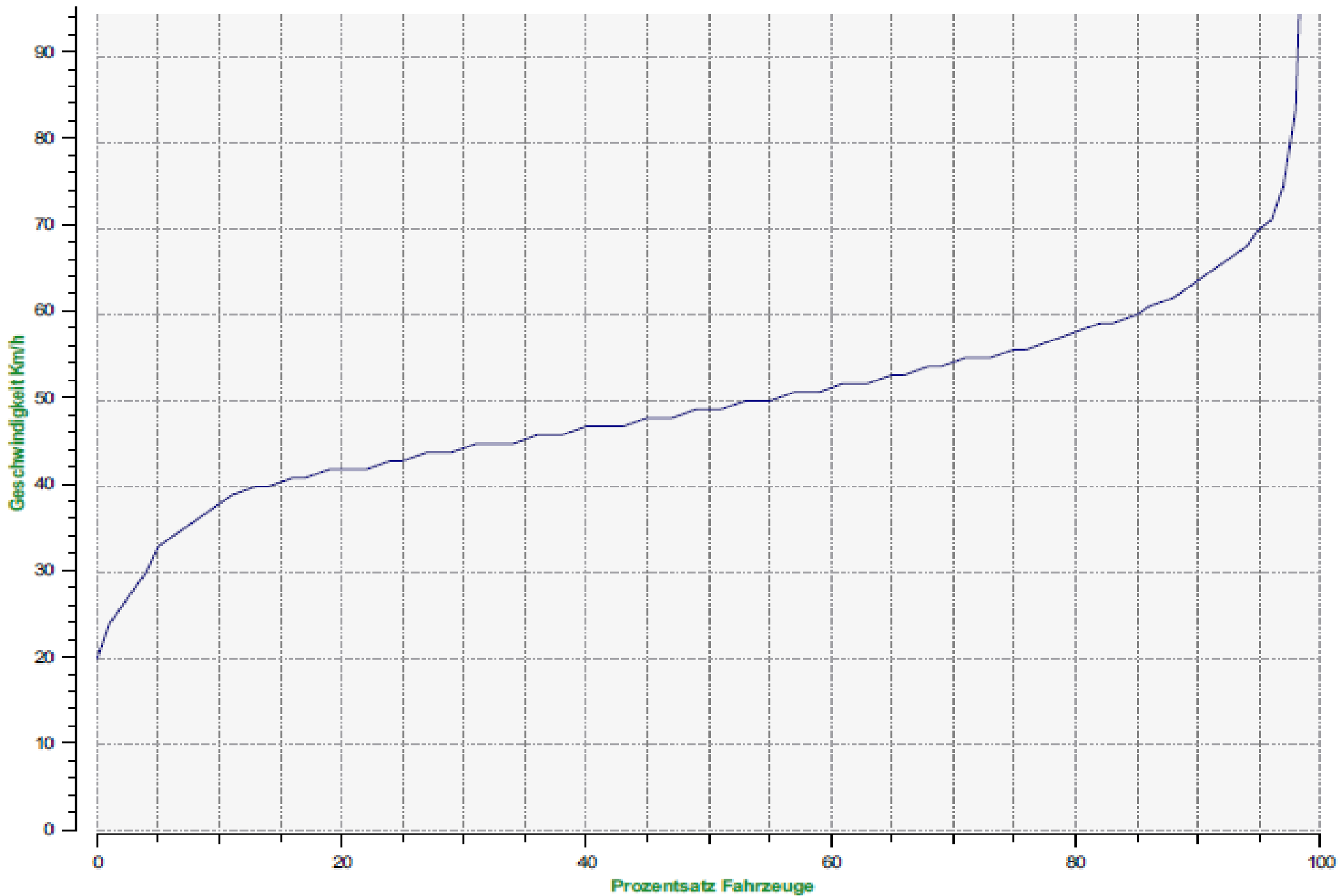


- ≤ 50 Km/h : 1.116 - (53.89 %)
- 51 - 70 Km/h : 869 - (41.96 %)
- 71 - 90 Km/h : 72 - (3.48 %)
- 91 - 110 Km/h (et +) : 14 - (0.68 %)



Perzentil Geschwindigkeit ankommende Richtung

V30: 39.00Kmyh **V50:** 42.00Kmyh **V85:** 50.00Kmyh



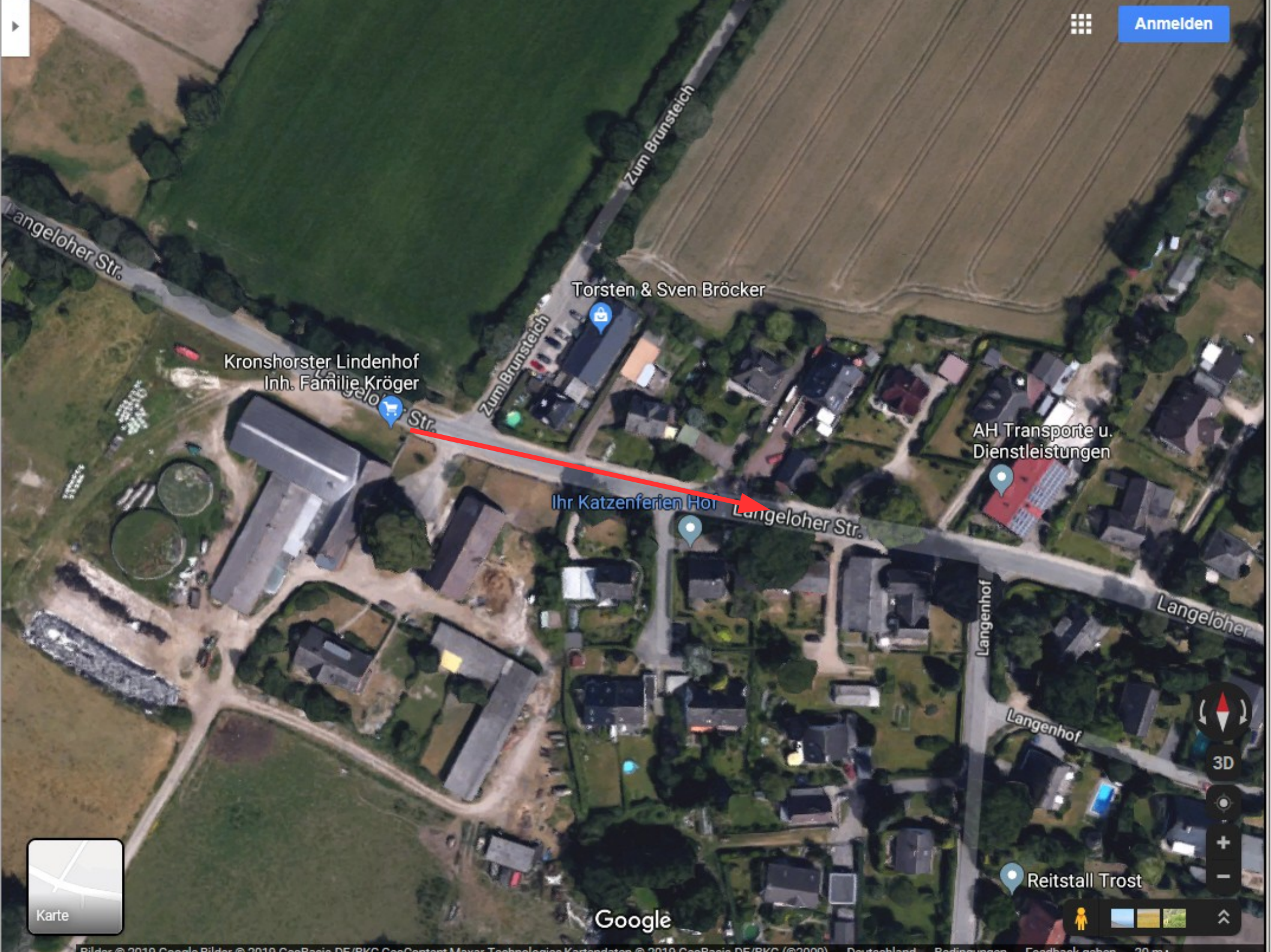
Perzentil Geschwindigkeit abfahrende Richtung

V30: 44.00Kmy/h **V50:** 49.00Kmy/h **V85:** 60.00Kmy/h

Kronshorst
L 160



Anmelden



Langelöher Str.

Zum Brunsteich

Torsten & Sven Bröcker

Kronshorster Lindenhof
Inh. Familie Kröger

Zum Brunsteich

AH Transporte u.
Dienstleistungen

Ihr Katzenferien Hof

Langelöher Str.

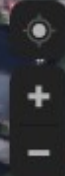
Langenhof

Langelöher

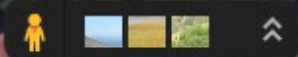
Langenhof



3D



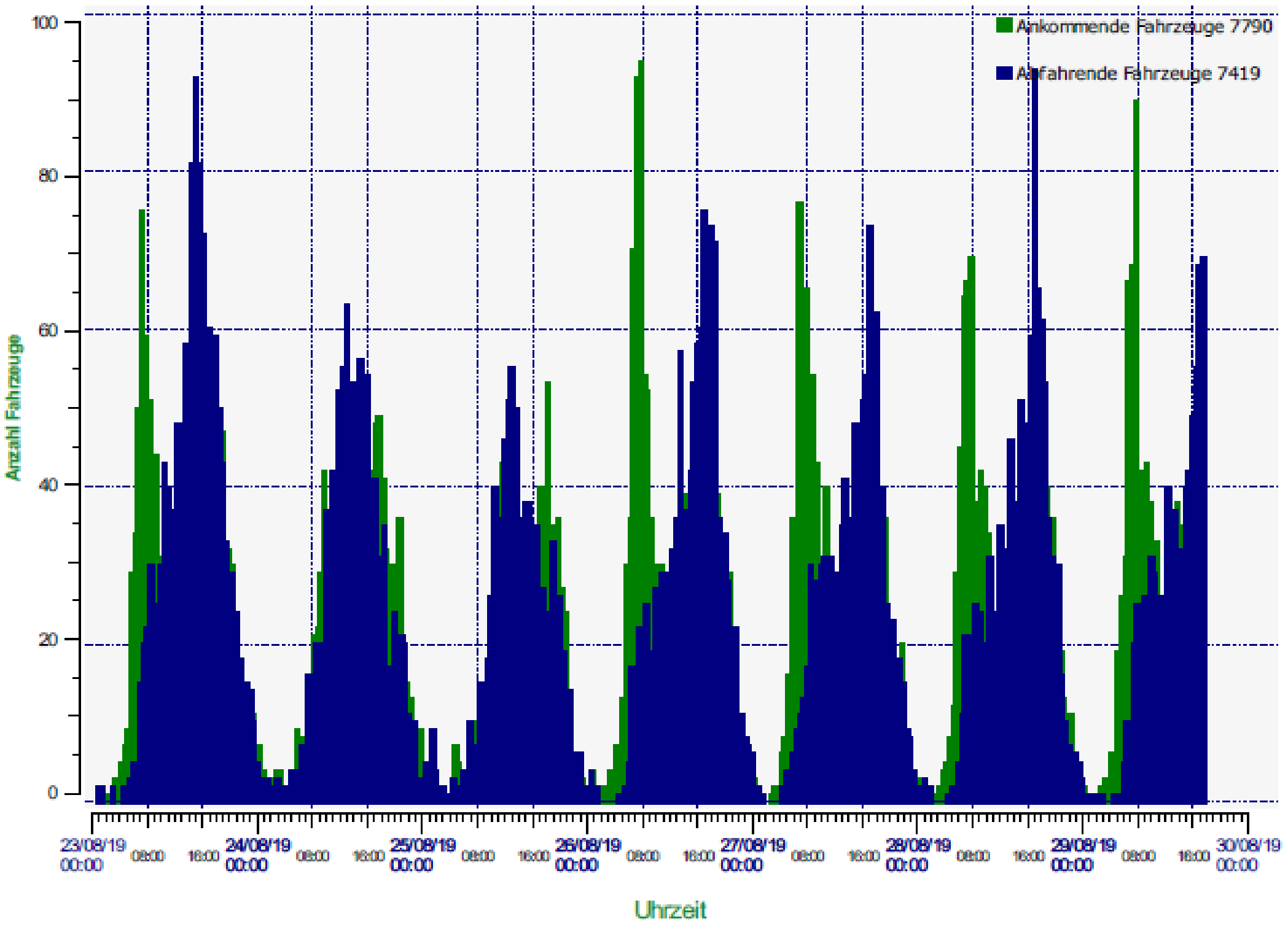
Reitstall Trost



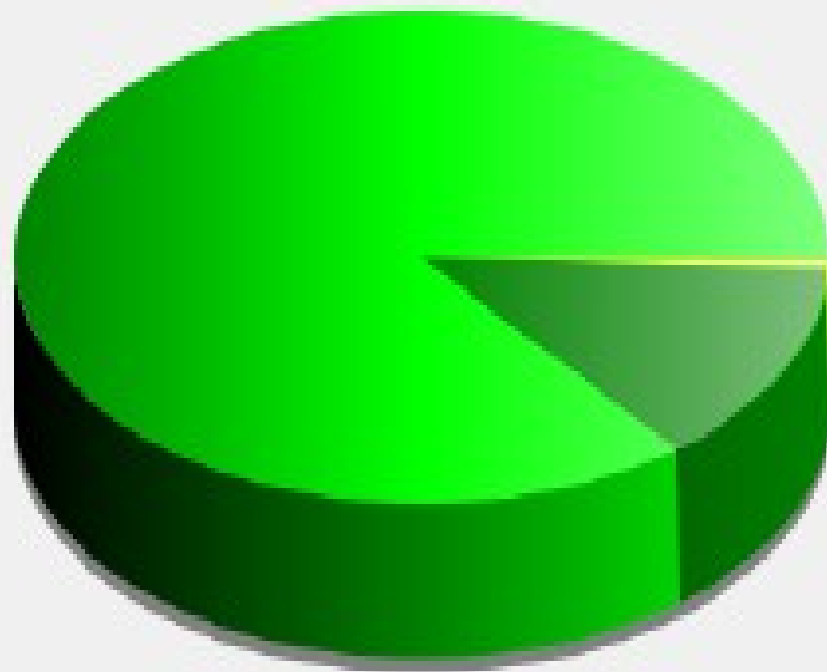
Google





23. bis 29. August

Fahrzeuge pro Stunde

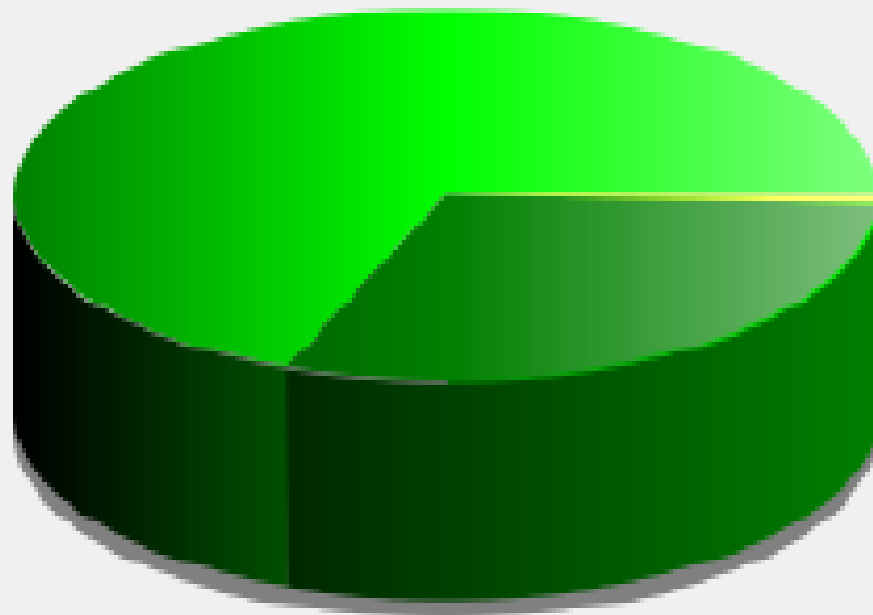


Ankommende Fahrzeuge



| | |
|---|-------------------------------------|
|  | <= 50 Km/h : 6.690 - (85.88 %) |
|  | 51 - 70 Km/h : 1.054 - (13.53 %) |
|  | 71 - 90 Km/h : 43 - (0.55 %) |
|  | 91 - 110 Km/h (et +) : 3 - (0.04 %) |

Abfahrende Fahrzeuge

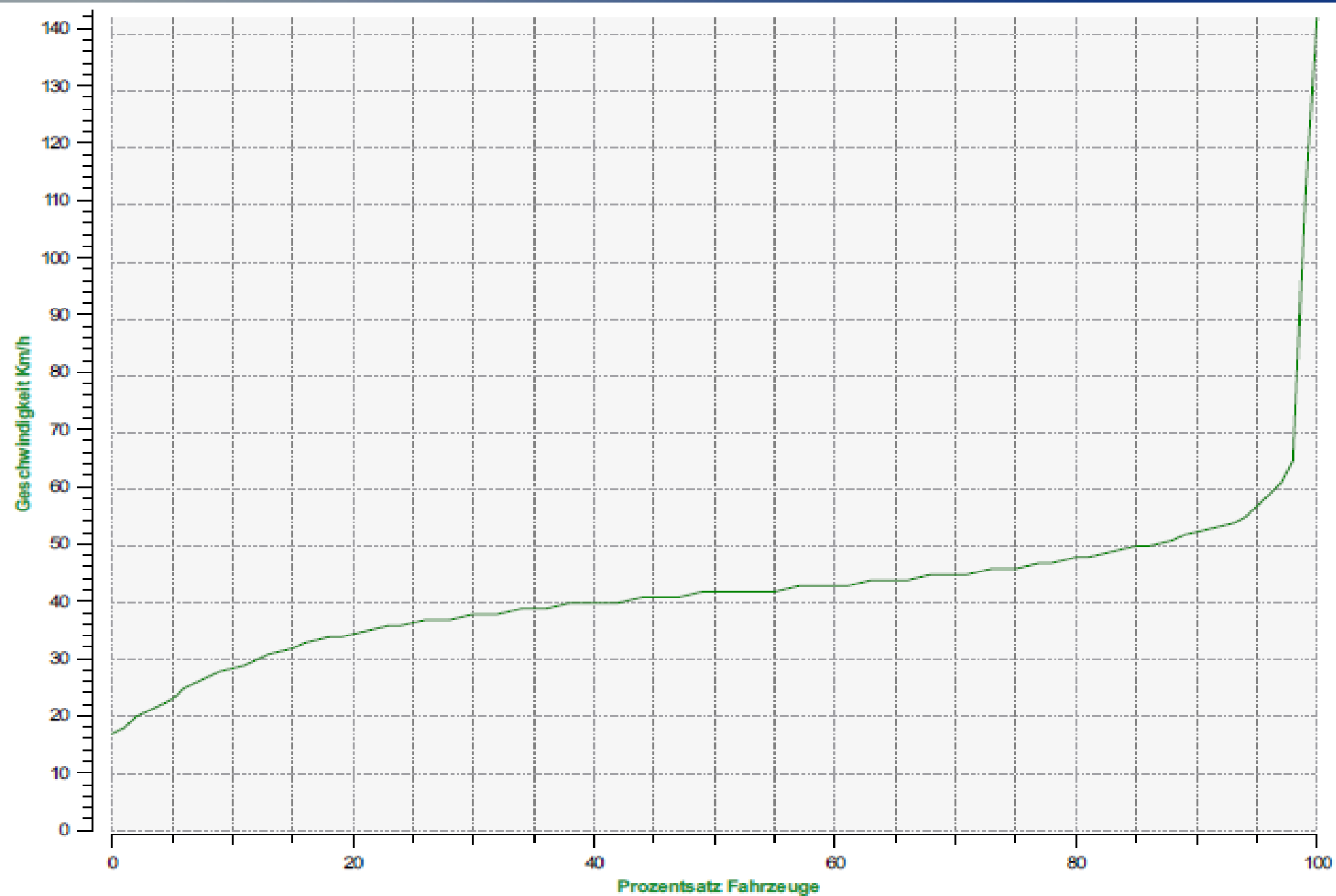


■ <= 50 Km/h : 5.124 - (69.07 %)

■ 51 - 70 Km/h : 2.241 - (30.21 %)

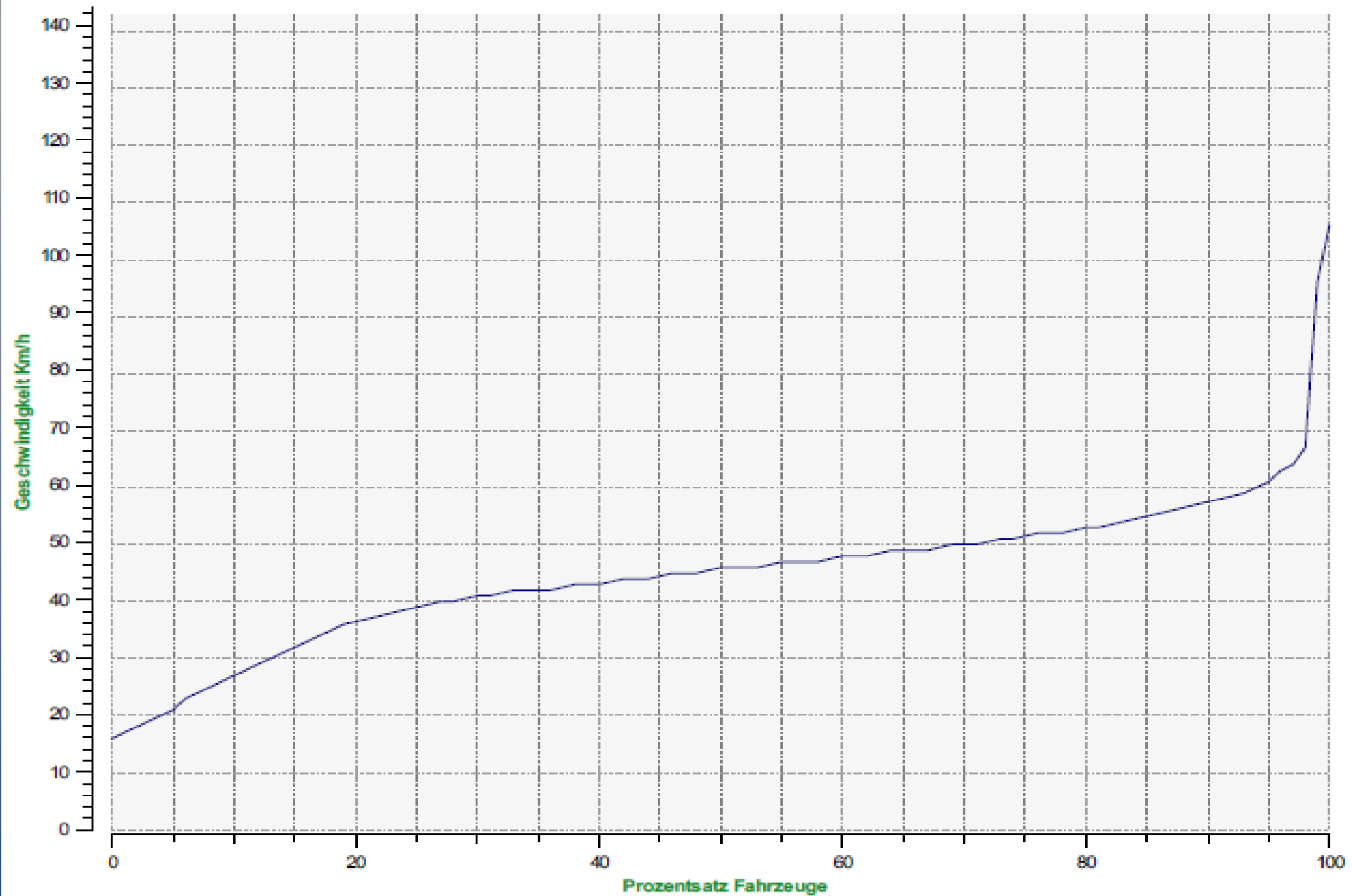
■ 71 - 90 Km/h : 51 - (0.69 %)

■ 91 - 110 Km/h (et +) : 3 - (0.04 %)



Perzentil Geschwindigkeit ankommende Richtung

V30: 38.00Km/h **V50:** 42.00Km/h **V85:** 50.00Km/h



Perzentil Geschwindigkeit abfahrende Richtung

V30: 41.00Km/h **V50:** 46.00Km/h **V85:** 55.00Km/h